

AirID Mini - QUICK START

Find the digital version of the ReadMe here!

Welcome to AirID Mini First Steps. Our Quick Start Guide is the perfect place to start and get an overview of the most important features of the AirID Mini. You will learn how to setup, pair with your phone/tablet/PC and connect.

If you would like to know more about AirID Mini and its capabilities, continue reading our User Manual, FAQ and HowTos. If further questions arise, please contact us at support@certgate.com

certgate is pleased to welcome you as a new user of certgate's wireless smart card reader for ID-000 cards, AirID Mini.

This guide explains all the basics of the certgate wireless smartcard reader AirID Mini and gives you step-by-steps instructions to get you started using AirID Mini. Please take the time to read the information and follow carefully the instructions and recommendations of the installation process.

Questions / support

For more information about our products visit our website: <https://certgate.com/en/>

Do you have any question or need support? Contact us at support@certgate.com

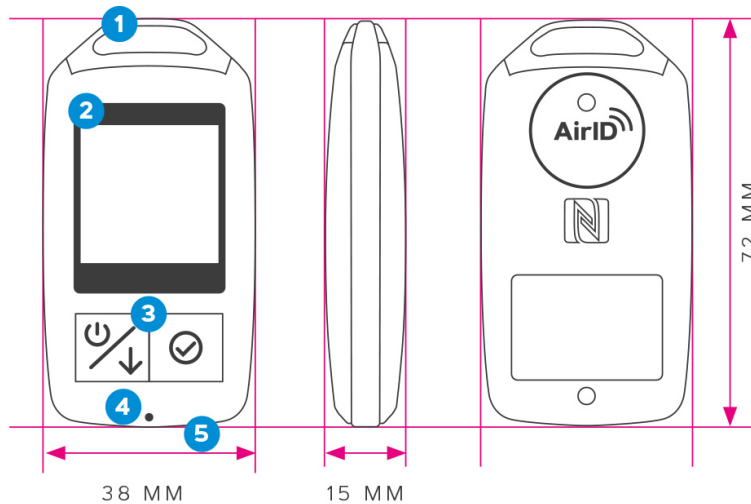
Content of Delivery

- AirID Mini smart card reader including Java Card
- USB cable
- Read Me First

Hardware Features

AirID Mini is a wireless smart card reader that you can carry with you at all times. The AirID Mini reader communicates via a secure Bluetooth Low Energy (BLE) connection with your device and makes the inserted smart card available for cryptographical operations such as data encryption or authentication.

Device Features



- 1 Keychain
- 2 Low Power LCD Display
- 3 2-button navigation
- 4 LED indicator
- 5 USB interface

If you want to change the inserted smart card, please find the guide here: [How can I change the smart card in AirID Mini?](#)

Control Element

AirID Mini is designed for easy menu navigation using a 2-button-navigation.

Button	Meaning
left	Long keypress: switching the device On / Off Short keypress: scrolling down
right	Short keypress: confirm / select

Status Indicator

Following status indicators exists on AirID Mini

Status	Status Indicator	Meaning
Smart card status		card not inserted, card not supported or damaged
		card inserted and card supported
		card access blocked (Distance Sensor)
Connection status		Bluetooth and advertising activated
		Bluetooth activated and connected to host
Battery status		remaining battery capacity

LED Indicator

Following LED indicators exists on AirID Mini

Color	Meaning
red	on while battery charging; off when battery charging is done
blue	on while bluetooth communication activities
green	on while smart card activities

Charging

AirID Mini is powered by a rechargeable Li-Po battery. The battery is charged by plugging the AirID Mini into either a computer or external USB wall adapter using the USB cable provided.

Power On

The device powers on with a long keypress of the left button.

Choose Your Platform



Windows 10

In this section, you will find the steps to download and install the AirID Windows driver, the AirID Central management application and to pair the AirID with your Windows device.

Prerequisites

In order to use AirID with your Windows device, a Windows 10 system with a Bluetooth Low Energy 4.0/4.2 support is required.

For workstations without built in Bluetooth Low Energy 4.0/4.2 capabilities, a USB Bluetooth Dongle or the [AirID Bridge](#) - an USB Bluetooth connector - **MUST** be used to provide connectivity.

Since Windows 7 doesn't support the Bluetooth Low Energy standard, a [AirID Bridge](#) is required additionally.

1 Installer Download

Download the latest Windows installer - a zipped .exe file - for Windows at the [Download Center](#).

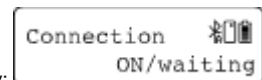
2 Driver and App Installation

Unzip and double click on the .exe installer file.

Follow the instructions in the installation wizard to install the AirID Windows driver and the AirID Central App.

3 Bluetooth Pairing

1. Power on your smart card reader
2. Make sure that Bluetooth is activated at your reader by pressing the AirID control element. AirID should display:
3. Open Windows "**Settings Devices Bluetooth**" and make sure, that Bluetooth is activated.
4. Click "**Add a Bluetooth device**" and your AirID should be listed with its serial number. Select the reader you want to connect with.
5. Follow the displayed instructions to pair the devices



After succesful pairing, "**Your device is ready to go!**" and the AirID serial number will be displayed on the Windows system and the device name of the paired device will be displayed on the AirID.

Using AirID

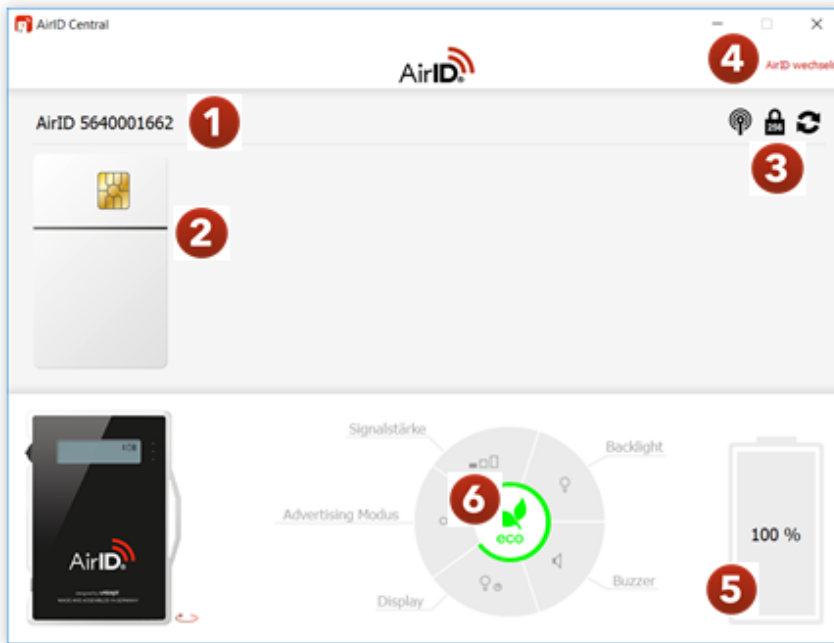
When AirID is successfully paired and the driver is installed there is a PC/SC reader registered in your Windows 10 which can be accessed like any other smart card reader. The inserted smart card is available to be used for cryptographical operations such as authentication or data encryption.

Examples

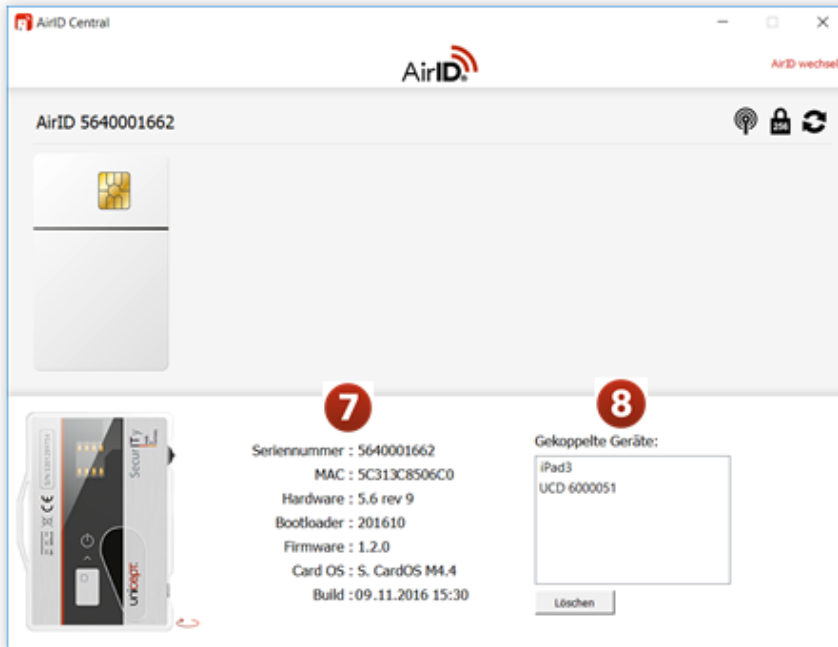
- 2-factor authentication: Windows smart card logon
- Distance Auto-Lock (Set "**Distance Sensor**")
- Signature and encryption for your email communication
- etc.

Using AirID Central

AirID Central is a management software for your AirID forming the basis for usage of the device. The tool provides you with information and setting options for your AirID when your reader is connected to your device. When there is no connection established the various display and settings panels aren't available. AirID Central is available for Windows, iOS and Android.



Displayed Information		AirID Configuration	
1	AirID Serial Number	6	<ul style="list-style-type: none"> • Signal Strength • Backlight • Buzzer • Display • Advertising
2	Smart Card Status		
3	<ul style="list-style-type: none"> • Distance Sensor • Used Encryption • Refresh (Firmware update) 		
4	List of connected AirIDs		
5	Batterie Status		



Displayed Information	
7	<ul style="list-style-type: none"> • Serialnumber • MAC Address • Hardware Version • Bootloader Version • Firmware Version
8	Paired Devices

Using AirID as USB Reader

If you intend to use AirID as a USB reader please insert your smart card, connect the AirID to your desktop via USB cable and set, if necessary, the option "USB Card Reader" displayed on AirID to "On" or "Yes" .

iOS

With iOS, a system-wide support of smart cards and card readers is not possible. In order to use AirID with a specific app, the AirID driver needs to be integrated into this app.

Examples of apps with AirID integration:

- SecurePIM by Virtual Solution
- your company specific apps*

*contact your company administrator!

If you would like to integrate AirID into your app, contact our support at support@certgate.com and get our [AirID SDK for iOS](#).

Prerequisites

In order to use AirID with your iOS device, the iOS version 10.3.3 upwards is required.

Make sure you have an internet connection to download the apps.

AirID need to be paired through an app on iOS. Here are the steps you need to follow in order to connect the AirID with your iOS device.

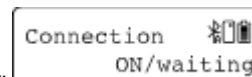
1
Third Party App / AirID Central App Download and Installation

Go to the App Store on your iOS device and search for your third party app / AirID Central.

Install the app on your iOS device.

2
Bluetooth Pairing

1. Power on your smart card reader



- 2. Make sure that Bluetooth is activated at your reader by pressing the AirID control element. AirID should display:
- 3. Make sure that Bluetooth is also activated on your mobile device (**Settings Bluetooth On**)
- 4. Open the third party app / AirID Central app and add your AirID. Your AirID should be listed with its serial number. Select the reader you want to connect with.
- 5. Follow the displayed instructions to pair the devices

After succesful pairing, "**Your device is ready to go!**" and the device name of the paired device will be displayed on your AirID.

If you already paired AirID with another device that are switched on and close to you, please navigate to "**Prefer Device**" in the AirID menu press the control element and choose "**New**". Then press the control element again to confirm.

Android

With Android, a system-wide support of smart cards and card readers is not possible. In order to use AirID with a specific app, the AirID driver needs to be integrated into this app.

Examples of apps with AirID integration:

- SecurePIM by Virtual Solution
- your company specific apps*

*contact your company administrator!

If you would like to integrate AirID into your app, contact our support at support@certgate.com and get our [AirID SDK for Android](#).

Prerequisites

In order to use AirID with your Android device, the Android version 8.0 (API level 26) upwards is required. Furthermore, a Bluetooth Low Energy functionality is necessary.

Make sure you have an internet connection to download the apps.

The functioning of the AirID SDKs with your Android device cannot be guaranteed due to the heterogeneity of Android. We are only supporting the Enterprise Edition of Samsung Galaxy S8 und S9.

In case of an unstable connection of AirID with your Android device or issues concerning the establishment of the connection, please contact our support at support@certgate.com!

AirID need to be paired through an app on Android. Here are the steps you need to follow in order to connect the AirID with your Android device.

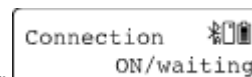
1
Third Party App / AirID Central App Download and Installation

Go to the Google Play Store on your Android device and search for your third party app / AirID Central.

Install the app on your device.

2
Bluetooth Pairing

1. Power on your smart card reader



- 2. Make sure that Bluetooth is activated at your reader by pressing the AirID control element. AirID should display:
- 3. Make sure that Bluetooth is also activated on your mobile device (**Settings Bluetooth On**)

4. Open the third party app / AirID Central app and add your AirID. Your AirID should be listed with its serial number. Select the reader you want to connect with.
5. Follow the displayed instructions to pair the devices

After successful pairing, "**Your device is ready to go!**" and the device name of the paired device will be displayed on your AirID.

If you already paired AirID with another device that are switched on and close to you, please navigate to "**Prefer Device**" in the AirID menu press the control element and choose "**New**". Then press the control element again to confirm.